



Northwestern
Michigan College

SURVEYING



LAND



UAS



MARINE

NMC's surveying program integrates all three areas.



LEARN DATA PROCESSING

Marine, surveying and remote sensing industries.

ASK ABOUT



PROFESSIONAL TRAINING

nmc.edu/marine-center

Geospatial Applications

Geospatial training emphasizes collecting and processing accurate, usable data on the natural and constructed world. You'll learn from expert instructors utilizing current industry standard equipment, including autonomous and remotely operated data collection systems that operate on land, in the air and in the marine environment.

nmc.edu/tech-plus



NMC awards \$1.3 million in scholarship funds annually

We're here to support you:

- > Learn from industry experts
- > Enjoy beautiful Traverse City, MI
- > Stop by the Academic & Career Advising Center
- > Meet with a coach at the Student Success Center
- > Tutoring, math, writing and reading centers
- > Live on campus
- > Explore real-world learning



Connect with us

Northwestern Michigan College

1701 E. Front Street, Traverse City, MI

Admissions: (231) 995-1054

Surveying: (231) 995-1300

nmc.edu/surveying | tech@nmc.edu



Get started today!



ASSOCIATE IN APPLIED SCIENCE DEGREE

Explore **real-world learning** with high-demand jobs



YOUR PATHWAY

to a successful career.



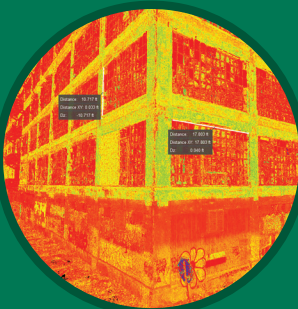
Job opportunities

There is a huge demand for well-trained surveyors regionally, statewide and nationally. Using state-of-the-art Leica Geosystems equipment, at NMC you'll learn professionalism, productivity, and responsibility to meet the growing demand.

Start your journey at NMC:

- Scholarships available
- Complete an associate degree in 2 years
- Professional training with state-of-the-art equipment

As a surveyor, you'll measure our world for road and bridge construction, buildings, utility and energy infrastructure and much more. Surveying is a hands-on, high-demand field with job opportunities with both private businesses and public agencies.



Technology



CAD laser scanning



Underground survey



"You can do absolutely nothing without a land surveyor.... We need to replace all these technicians so we can go out and make maps, so we can define all these areas."

Richard R. Sauve II, Leica Geosystems, Fenton, Mich., Surveying Advisory Committee member

SURVEYING SCHOLARSHIPS

Awarded exclusively to surveying students

Atwell LLC
Up to \$1,000
2.75+ GPA

Robert R. Carr
Up to \$1,000
Enrolled in 6+ credits
Essay required.

NMC offers a bachelor's degree pathway.

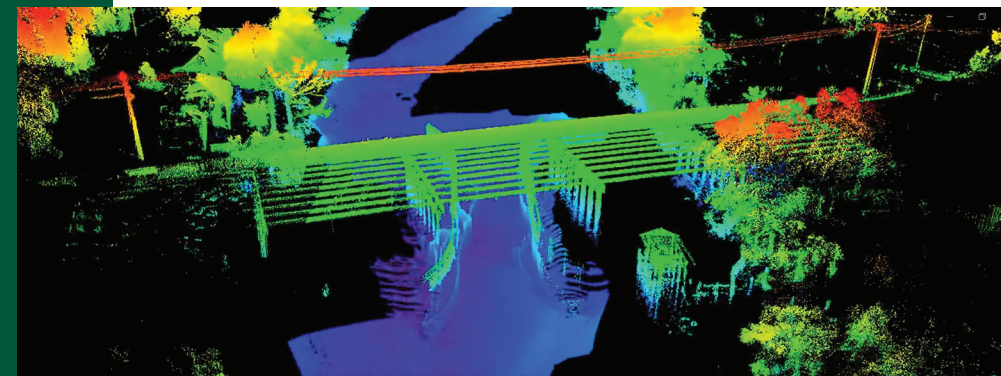


YEAR 1 Associate in Applied Science degree

	COURSE	TITLE	CREDITS
FALL	SVR 111	Intro to Field Surveying	2
	SVR 112	Intro to Surveying Data Use	3
	SVR 120	CAD for Surveying (Fall only)	4
	ENG 111	English Composition	4
		Approved Elective	3-4
	CREDITS		16-17
SPRING	SVR 150	Construction Survey App (Spring only)	5
	SVR 160	Surveying Calculations (Spring only)	3
	ENG 220	Technical Writing	3
	MTH 121	College Algebra	4
		CREDITS	
SUMMER	WSI 200	GL Research Technologies (Summer only)	3
	GEO 115	Introduction to GIS	3
		CREDITS	

YEAR 2

FALL	SVR 220	Boundary Surveying (Fall only)	3
	WSI 300	Remote Sensing and Sensors (Fall only)	3
	MTH 122	Trigonometry	3
	PHL 105 or PHL 203	Critical Thinking or Environmental Ethics	3
		CREDITS	
SPRING	UAS 121	UAS Applications in Surveying	3
	PHY 105	Physics of the World Around Us	4
	SVR 210	Surveying Positioning (Spring only)	5
	MTH 131	Intro to Prob & Stats	3
		CREDITS	
	TOTAL CREDITS		61-62



Already have a bachelor's degree?

Take 30 NMC survey credits

Become a licensed surveyor

NMC prepares you for **LAND-AIR-SEA** technologies

High wage, high demand survey jobs

THE WHOLE PACKAGE AT NMC

"The curriculum is great. The staff are outstanding. The facilities and equipment are perfect. NMC has hit it out of the park!"

— James B. Schiffer, P.E.