



NMC

CAMPUS MASTER PLAN

COMMUNITY WORKSHOP

01-24-2024

- 1. Consolidation of University Center Campus**
 - a. UC Partners to Front Street Campus (Beckett)
 - b. NMC Departments to Front Street Campus
 - c. Manage UC as Real Estate Asset Versus Education Building

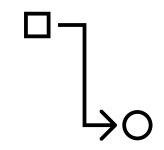
- 2. Front Street Campus Revitalization**
 - a. Osterlin – One-Stop Student Services Hub
 - b. Tanis – Administration Building
 - c. Power Plant – Geothermal Conversion
 - d. Housing – Expanding Dorms and Apartments
 - e. Outdoor Learning Center – Support for Distinctive Programming

- 3. Aero Park Revitalization**
 - a. Aviation Hangar Expansion
 - b. Aviation Reconfiguration in Parsons-Stulen

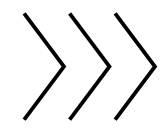
- 4. Freshwater Research and Innovation Center**

- 5. Real Estate Strategy**
 - a. Divest Unproductive Real Estate Assets
 - b. Leverage Eastern Avenue for Campus Expansion





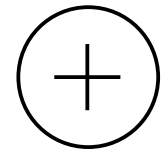
Support the 2022 – 2025 Strategic Plan.



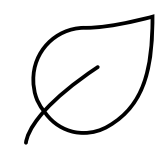
Focus on the future NMC. Maximize flexibility to allow the college to adjust to evolving needs of students, staff, and faculty.



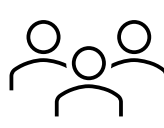
Clearly define priorities and identify opportunities for diversifying the college’s funding streams.



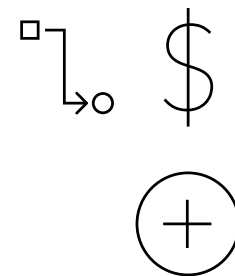
Establish a vibrant main campus that enhances a sense of belonging and college identity.



Prioritize sustainability in capital planning and asset management. This include responsible use of energy, materials, and fiscal resources.

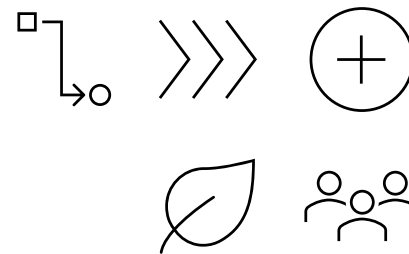


Enhance connections to the communities that interface with the college.



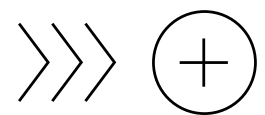
1. Consolidation of University Center Campus

- UC Partners to Front Street Campus (Beckett)
- NMC Departments to Front Street Campus
- Manage UC as Real Estate Asset Versus Education Building



2. Front Street Campus Revitalization

- Osterlin – One-Stop Student Services Hub
- Tanis – Administration Building
- Power Plant – Geothermal Conversion
- Housing – Expanding Dorms and Apartments
- Outdoor Learning Center – Support for Distinctive Programming

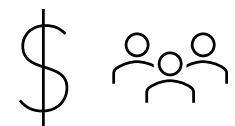


3. Aero Park Revitalization

- Aviation Hangar Expansion
- Aviation Reconfiguration in Parsons-Stulen

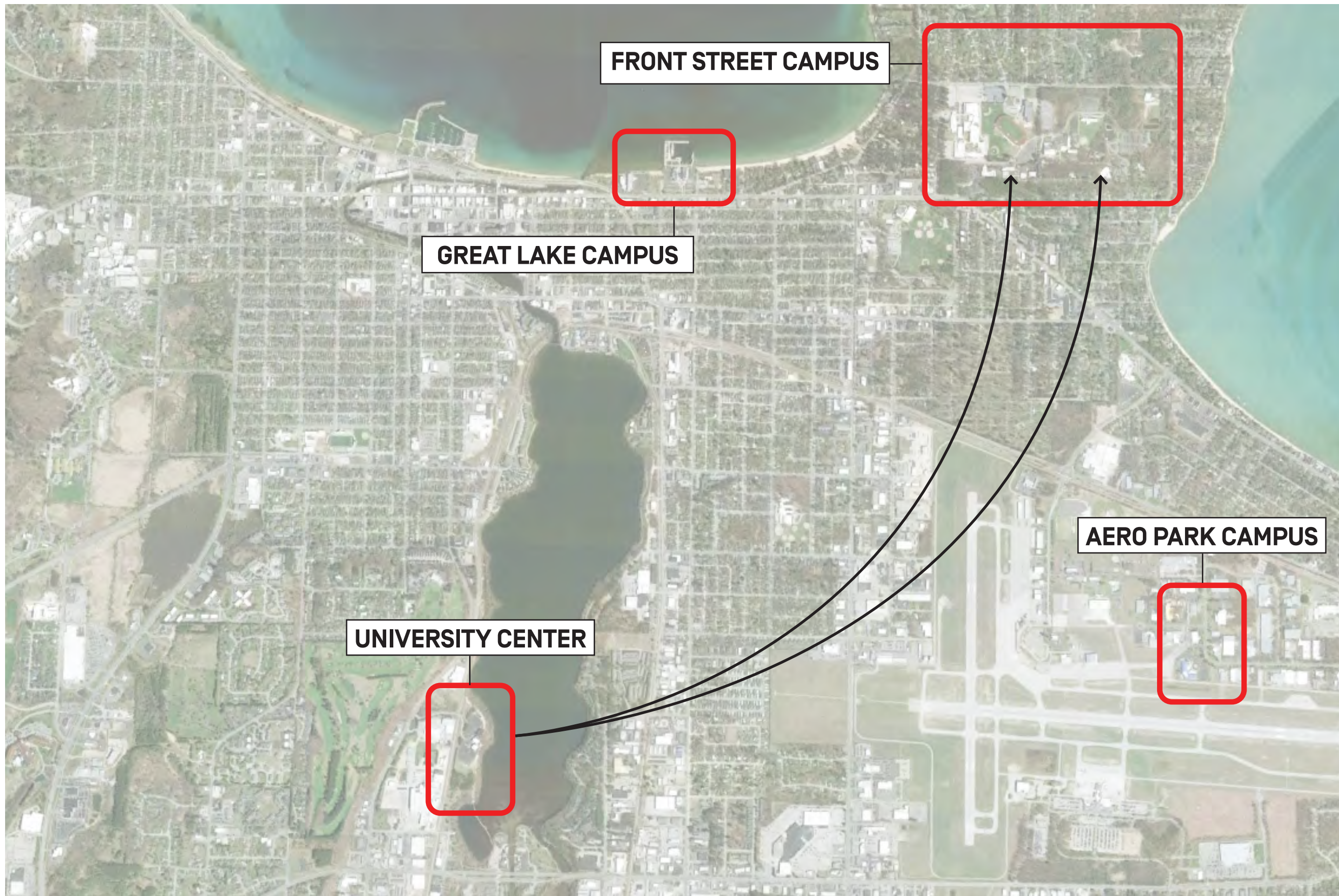


4. Freshwater Research and Innovation Center

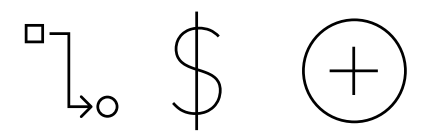


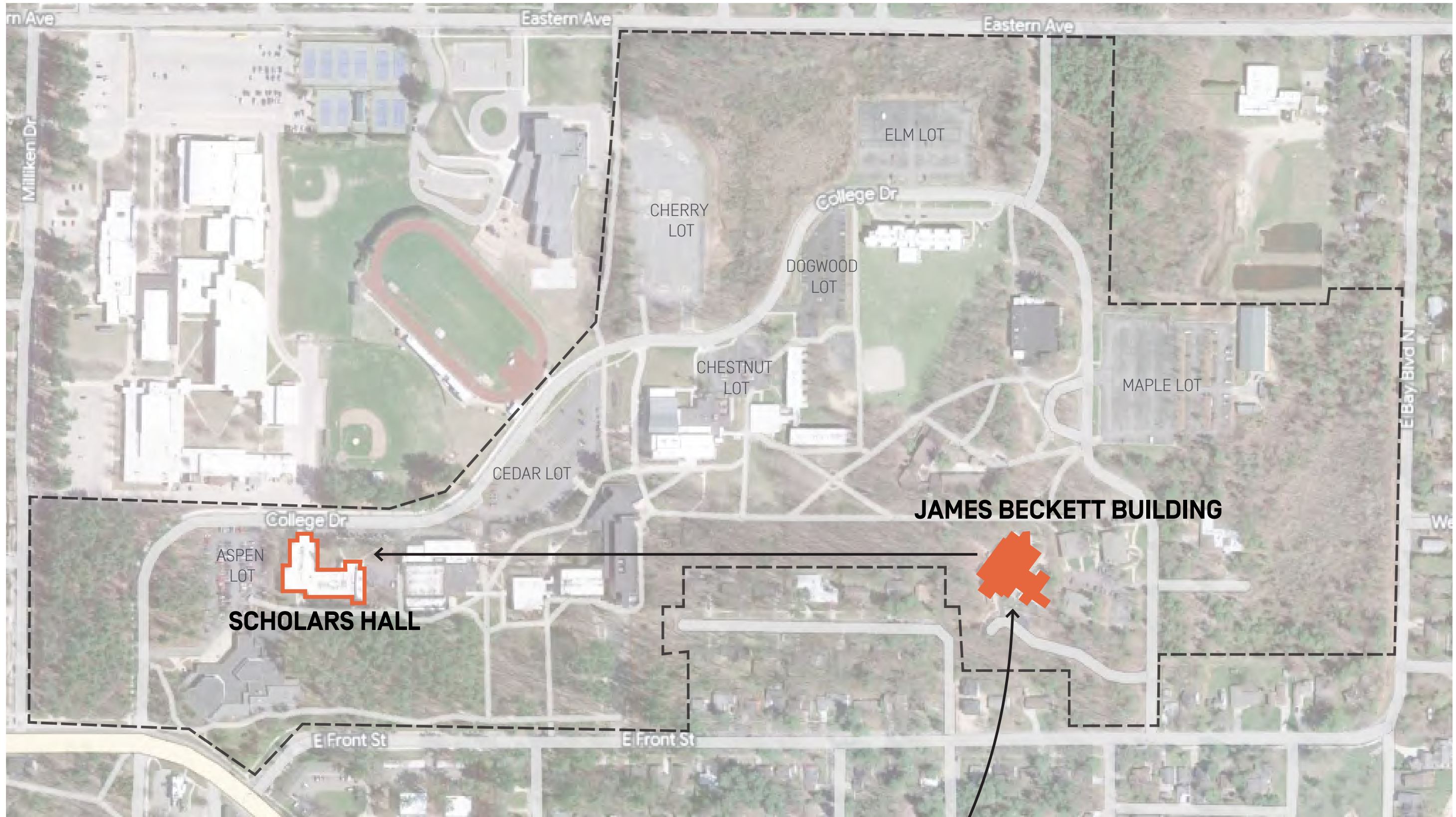
5. Real Estate Strategy

- Divest Unproductive Real Estate Assets
- Leverage Eastern Avenue for Campus Expansion

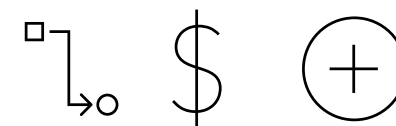


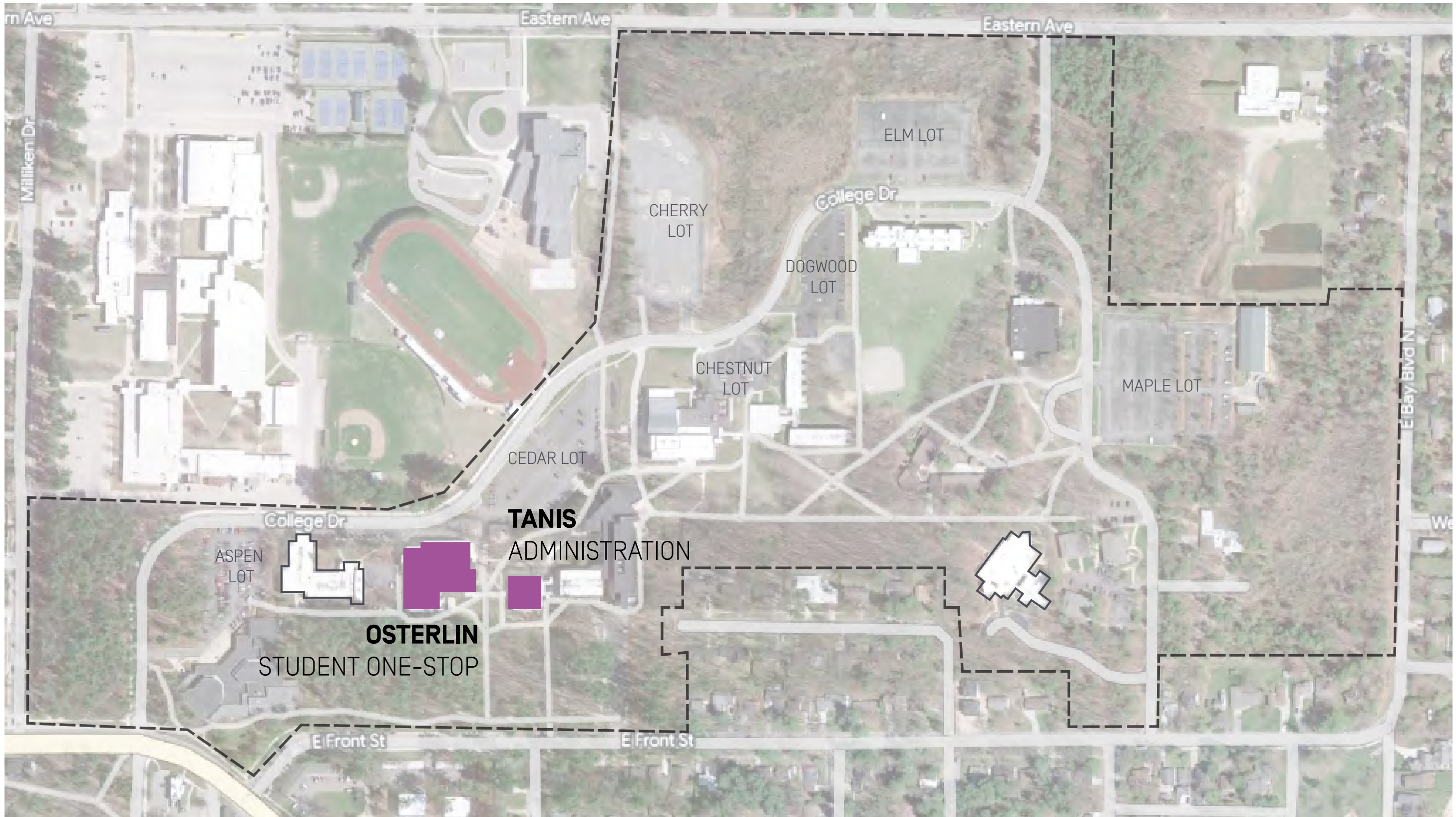
CONSOLIDATION OF UNIVERSITY CENTER CAMPUS



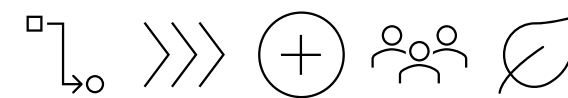


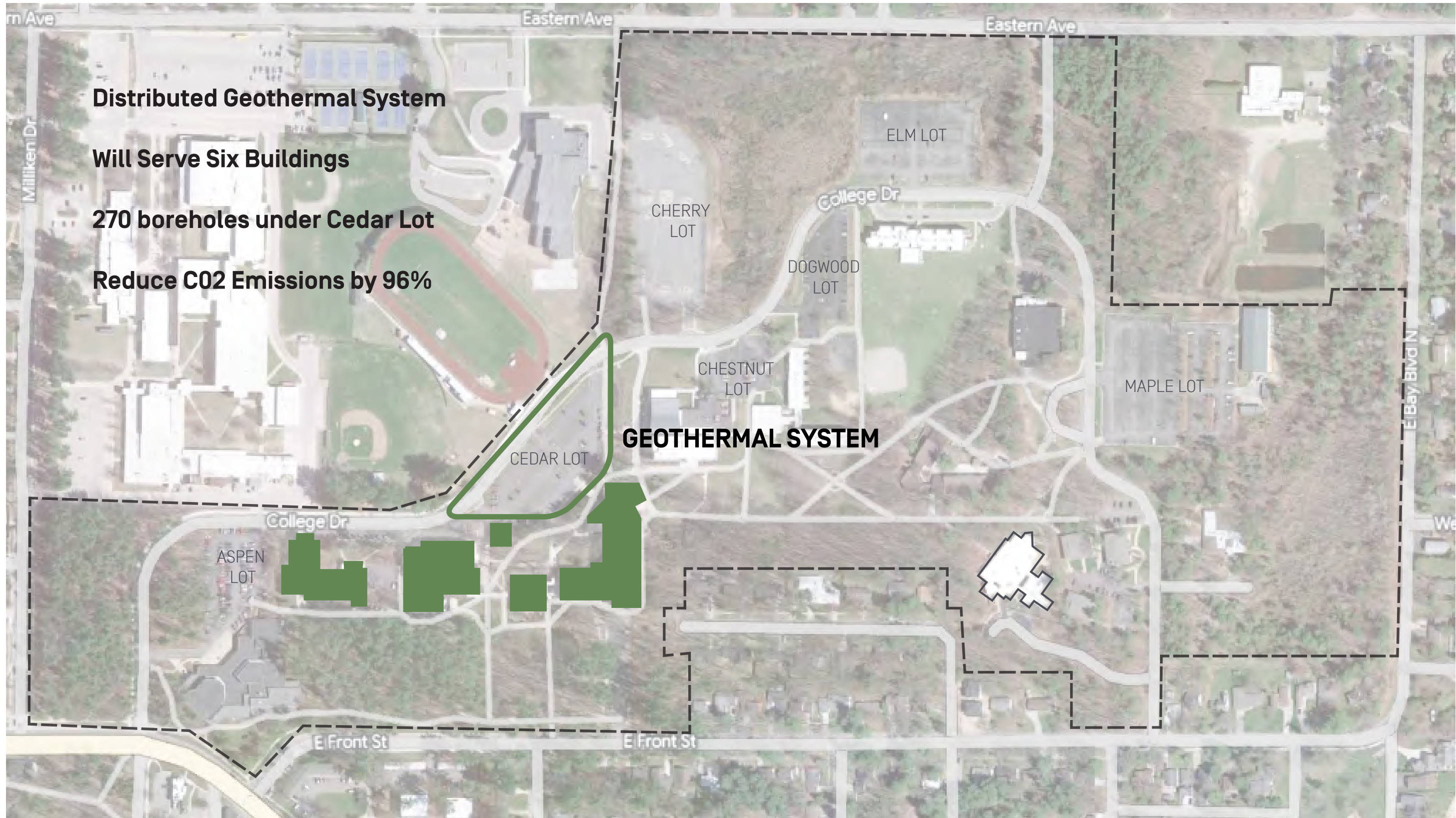
CONSOLIDATION OF UNIVERSITY CENTER CAMPUS
TAPPING UNDERUTILIZED SPACE





FRONT STREET CAMPUS REVITALIZATION
STUDENT ONE-STOP & CONSOLIDATE ADMINISTRATION



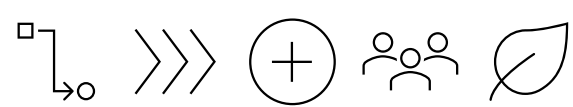


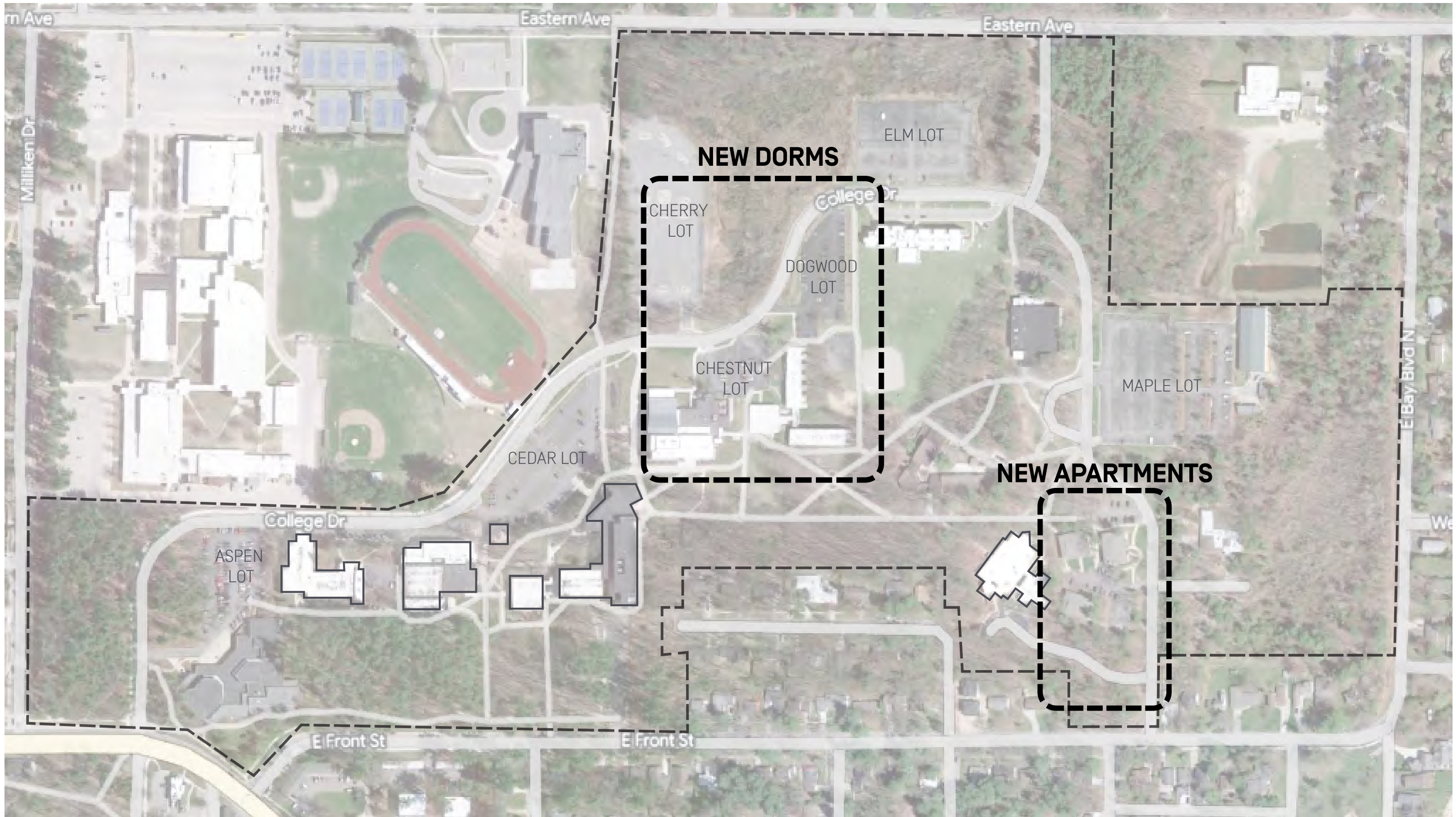
Distributed Geothermal System
Will Serve Six Buildings
270 boreholes under Cedar Lot
Reduce CO2 Emissions by 96%

GEOTHERMAL SYSTEM

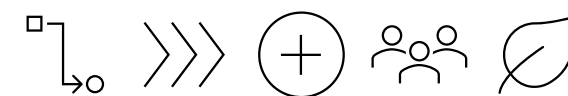


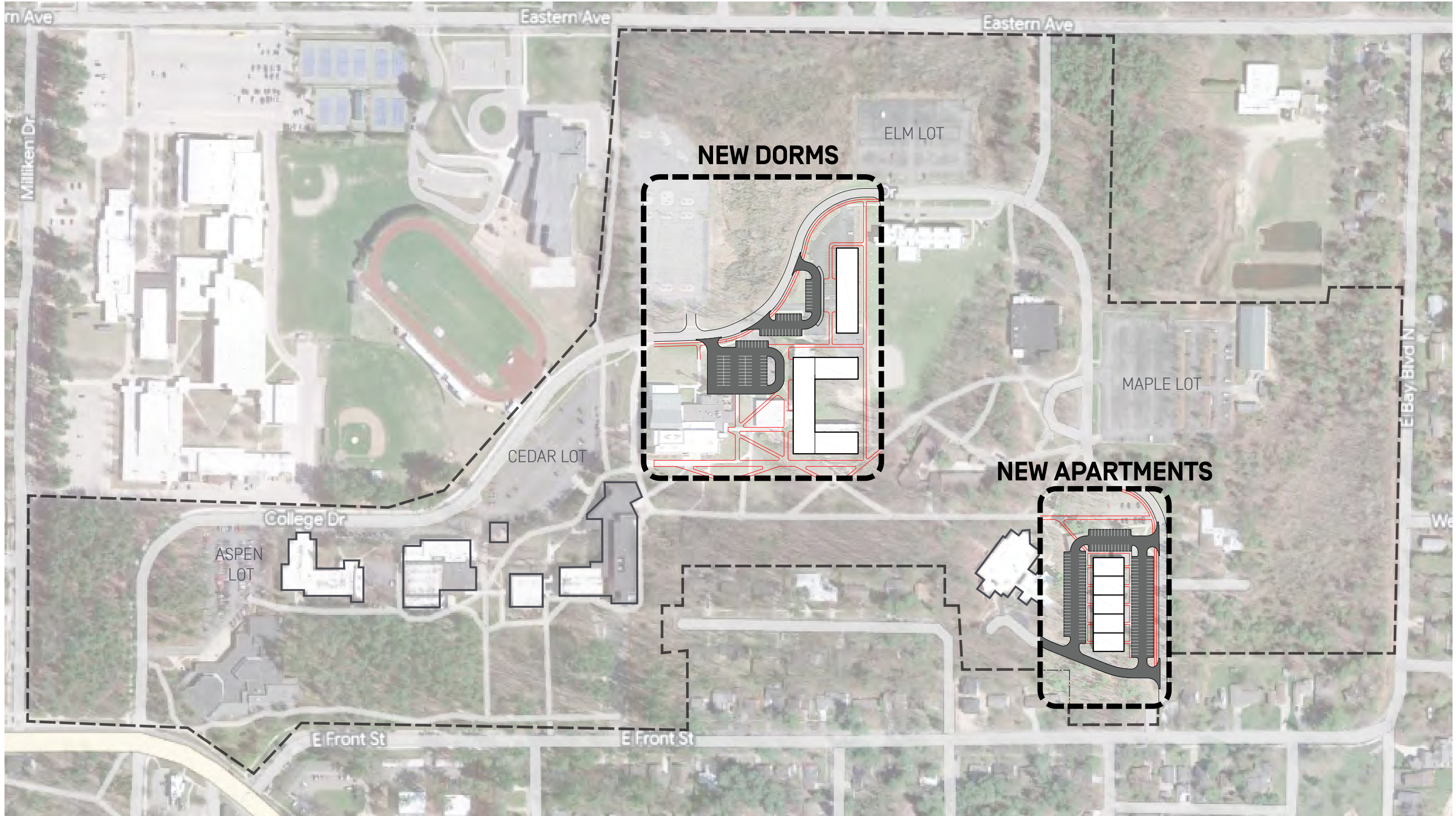
FRONT STREET CAMPUS REVITALIZATION
 GEOTHERMAL SYSTEM FOR CENTRAL CAMPUS



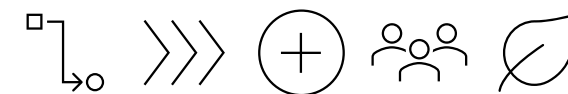


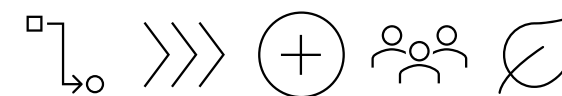
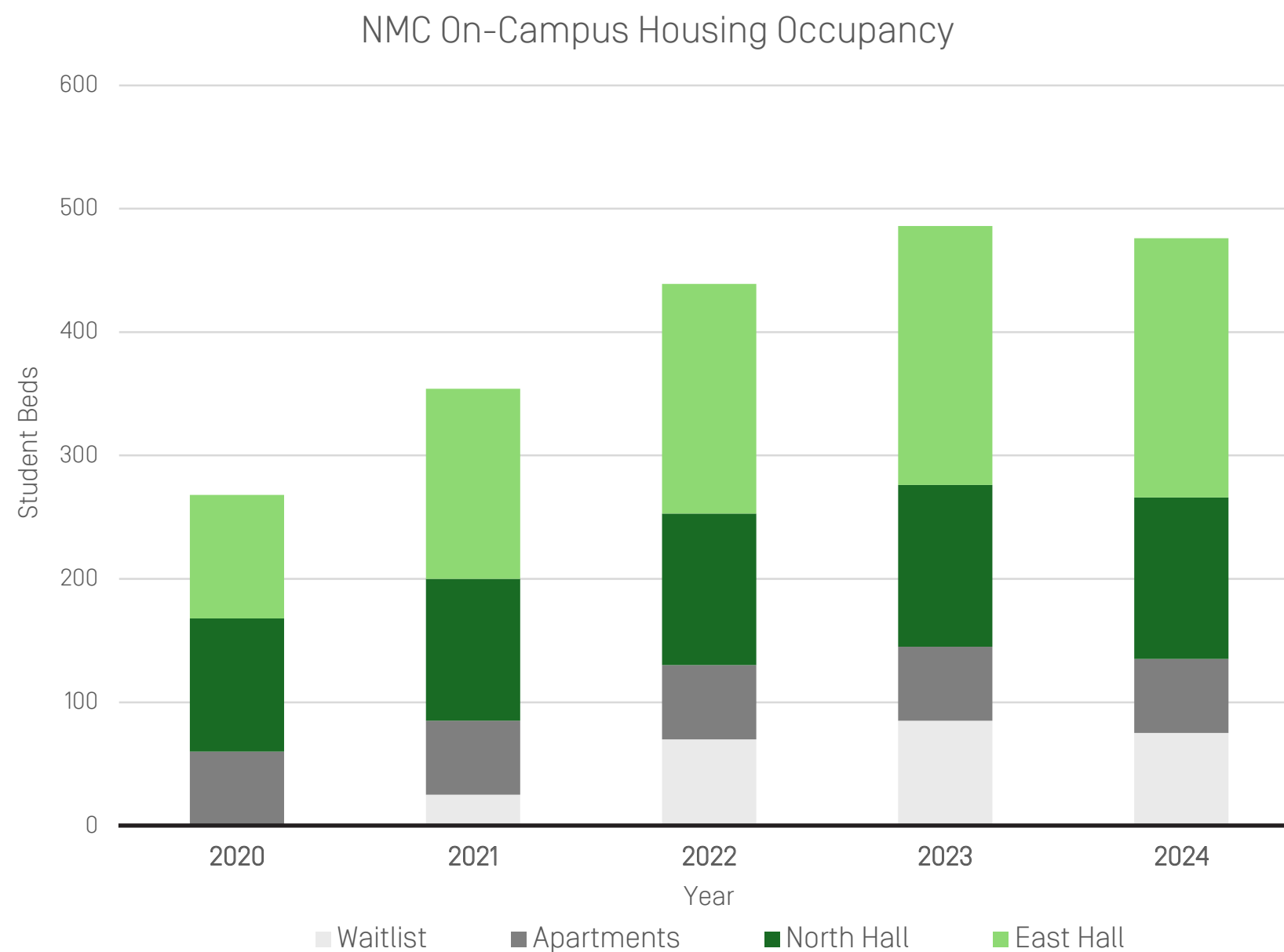
FRONT STREET CAMPUS REVITALIZATION
STUDENT HOUSING





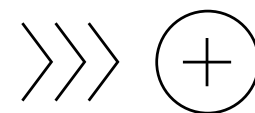
FRONT STREET CAMPUS REVITALIZATION
 STUDENT HOUSING







AERO PARK REVITALIZATION
AVIATION HANGER EXPANSION & RECONFIGURATION



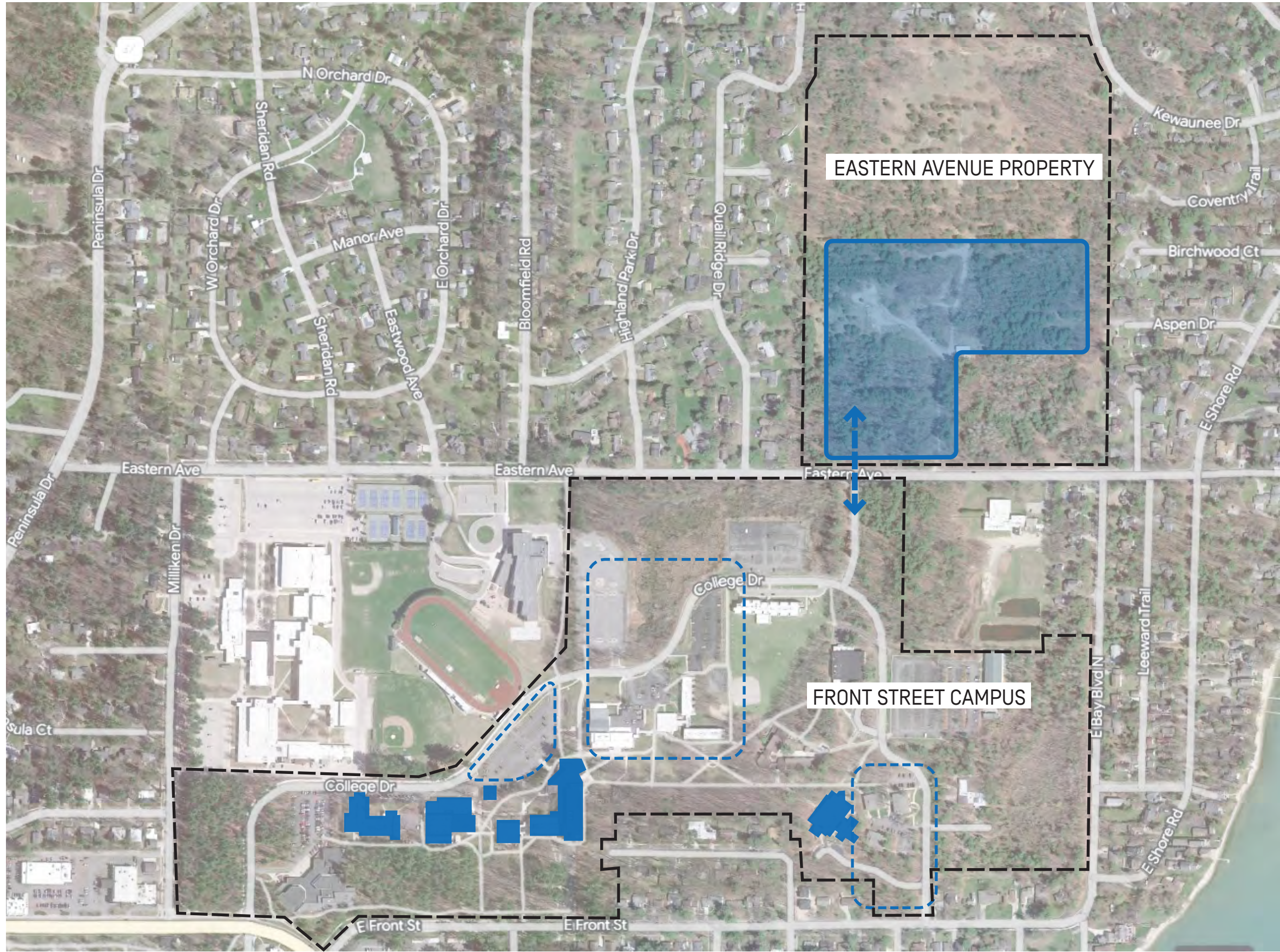


FRESHWATER RESEARCH AND INNOVATION CENTER

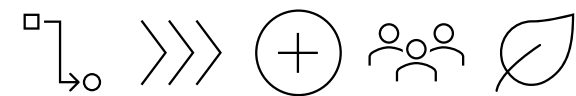


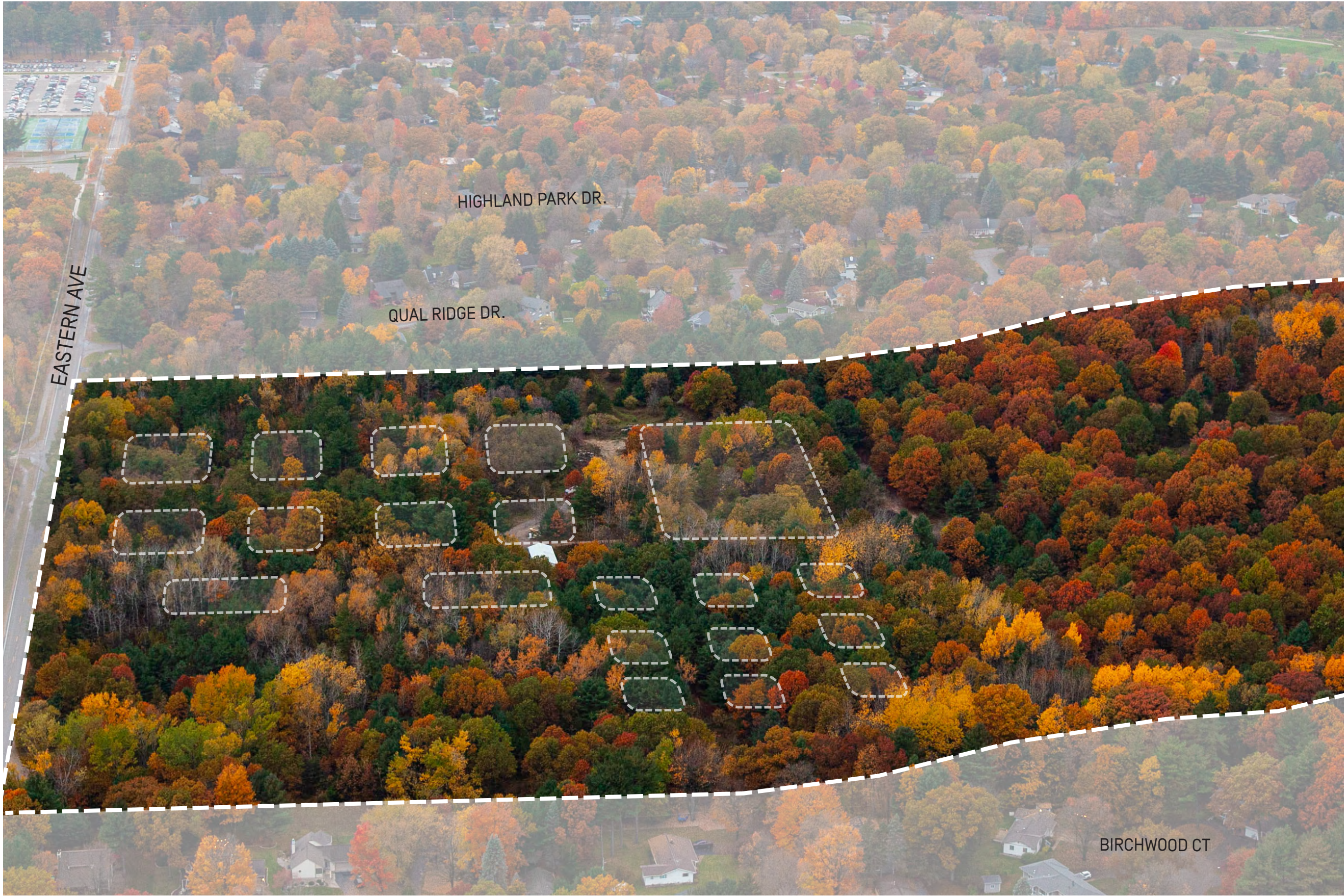
LIVE POLL 2



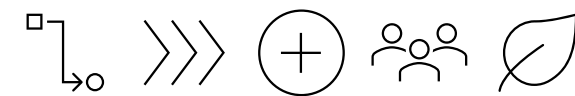


REAL ESTATE STRATEGY
 EASTERN AVENUE FOR CAMPUS EXPANSION





REAL ESTATE STRATEGY
EASTERN AVENUE FOR CAMPUS EXPANSION



	2024	2025	2026	2027	2028	2029	2030	2031	2032	2033	2034
1. Consolidation of University Center Campus											
UC Partners & NMC Partners to Front Street Campus											
Manage UC as Real Estate Asset											
2. Front Street Campus Revitalization											
Osterlin - Student One-Stop											
Tanis - Admin Building											
Cedar Lot - Geothermal System											
Housing - Expanding Dorms & Apartments											
3. Aero Park Revitalization											
Aviation Hangar Expansion & PS Reconfiguration											
4. Fresh Water & Innovation Center											
Fresh Water & Innovation Center											
5. Real Estate Strategy											
Divest Uproductive Real Estate Assets											
Eastern Avenue Campus Expansion											



POTENTIAL TIMELINE FOR IMPLEMENTATION



POLL 3



MENTIMETER LIVE POLL 3

